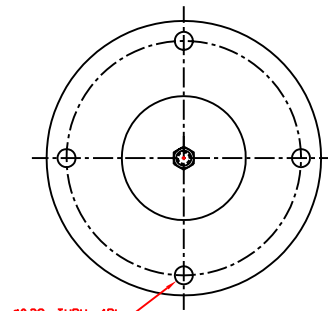
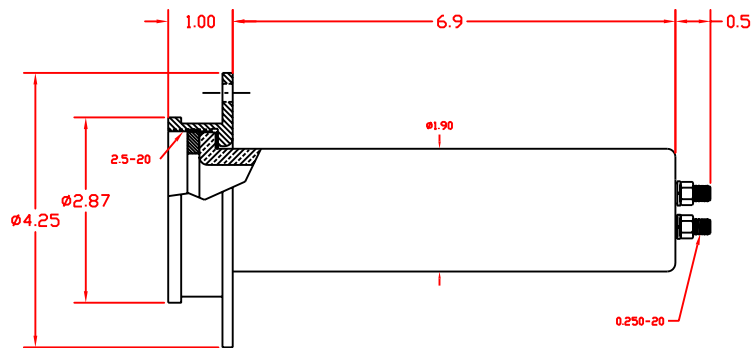
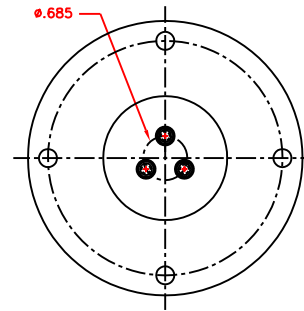


150KV FEDERAL STANDARD RECEPTACLE

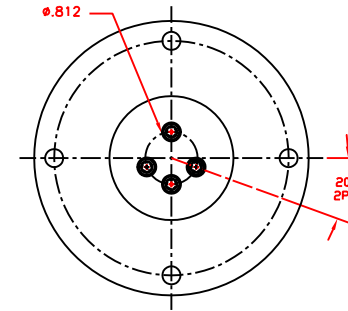
OPERATING VOLTAGE- 150KVDC MAX
DESIGNED FOR USE IN OIL OR INSULATING GAS



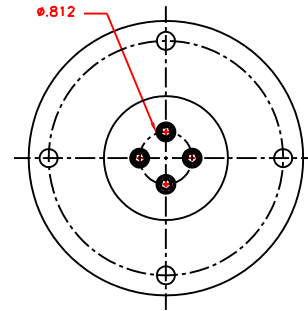
1 CONDUCTOR
(1739 STYLE)



3 CONDUCTORS
(1734 STYLE)



4 CONDUCTORS
(1911 STYLE)



4 EQUAL CONDUCTORS
(1862 STYLE)